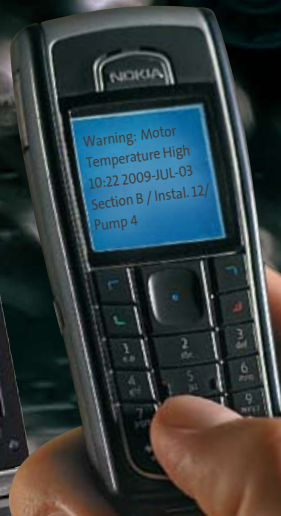


GRUNDFOS REMOTE MANAGEMENT

Internet-based pump monitoring

BRING ALL YOUR PUMPS ONLINE



BE > THINK > INNOVATE >

GRUNDFOS 

CONNECTING PUMPS AND PEOPLE

Internet-based remote management system

With this secure and reliable remote management system, you can monitor and manage your pump systems from an Internet PC at a very low price.

Grundfos Remote Management is a cost-effective and straightforward way to monitor and manage pump installations in commercial buildings and in water supply and wastewater infrastructure. It reduces the need for onsite inspections, and in the event of an alarm or warning, the relevant people are notified directly.

Compared to mobile phone based monitoring, the system offers a wider range of benefits and functionalities. For those who do not require remote process automation, Grundfos Remote Management is the ideal solution for monitoring

and remote control as opposed to traditional SCADA systems. Initial investment is minimal, and a fixed low fee covers data traffic, hosting costs and system support, including back-up of all data.

The CIU271 communication interface enables data transmission via GPRS / SMS from your Grundfos pumps and controllers. The built-in multi-purpose I/O board allows you to connect sensors and switches.



BE THE FIRST TO KNOW

Easy and cost-effective monitoring and management of critical installations. If anything needs attention, you will be the first to know.

Wastewater pumping stations

Monitor standard wastewater pumps, sensors and controllers of any make and model, including automatic reports of operational data.

Water treatment plants

Monitor flow and pressure sensors, tank levels, pumps and security alarms, including automatic reports of power consumption and operational data.

Mines and construction sites

Receive alarms from dewatering pumps immediately in the critical event of breakdown or malfunction.

Irrigation

Monitor tank levels, pressure gauges and pumps to be sure crops and livestock always have enough water.

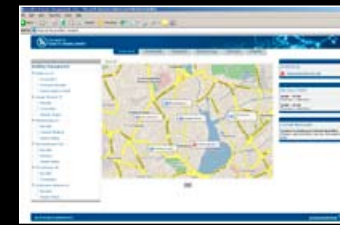
Building installations

HVAC, fire protection units and pressure boosters are monitored and managed from a central location, ensuring and documenting services to building users.



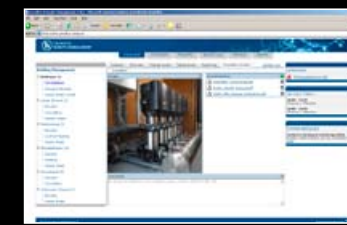
A PRECISE PICTURE

A full overview of the operation, performance and trends.



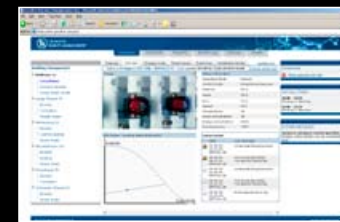
Complete overview

See the status of your entire system on your own map or aerial photo.



Share documentation

Upload system documentation to a secure server and make it accessible to all relevant personnel.



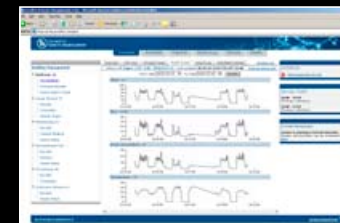
Online with your pumps

Live monitoring, analysis and adjustments from the comfort of your office.



Flexible on-call schedule

Simple planning of who responds to alarms in rotating weekly schedules.



Monitor energy consumption

Trends and reports may reveal opportunities to reduce energy consumption and optimize system performance.



Manage service & maintenance

Plan service work on the basis of actual operating data and get notification when service is due.

TOP SECURITY AND FULL IT-SUPPORT

Grundfos Remote Management is internet-based, and a fixed low fee covers data traffic, hosting and full IT support. Given the critical nature of the services provided, the integrity of the system and your data is a top priority.

Enterprise-class hosting and support is provided by Grundfos' IT organisation, using the same data centres as our own business-critical systems for production, sales and service organisations. With so much at stake, the infrastructure is set up in two independent data centres reflecting the aim of eliminating single points of failure. Redundancy is assured for the server, network and power supply as well as data storage and back-up. The system is monitored 24/7.

This level of security is directly available when using Grundfos Remote Management. All your people need is Internet access, a standard browser and a password.



SEE THE BIGGER PICTURE

Grundfos is a global leader within water handling technology. Our passion is to bring you all the products you require to create and operate pump systems that combine reliability, cost-efficiency – and innovation. Our products are for use in water supply and wastewater infrastructure on any scale.

Grundfos has a full line of products and systems for the intake, treatment, and distribution of drinking water and for the transport and treatment of wastewater. We also offer expertise and industry insight that can increase reliability and reduce lifecycle costs for water utilities.

Key product areas include:

-  Submersible pumps
-  Surface pumps
-  Sewage pumps
-  Mixers, flowmakers & recirculation pumps
-  Pumping stations
-  Monitoring & controls
-  Dosing & disinfection
-  Aeration equipment

Our products are the result of decades of engineering expertise. Supported by a worldwide service network. Visit grundfos.com/water-utility for more.